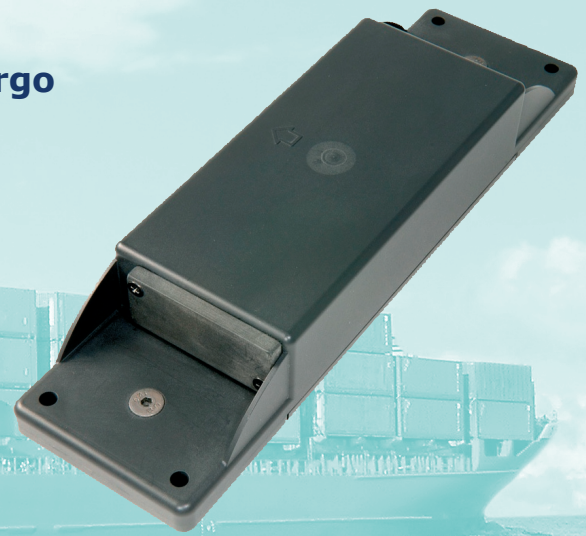


m!Trace Guardian

Autonomous GPS positioning and security system for remote assets and transported cargo

- Compact, extremely rugged GPS tracker
- More than 4 years unattended battery life
- Configurable send intervals
- Integrated movement sensor & door sensor
- Automated exception alerts and alarms
- Easy installation
- International SIM with flat-fee roaming



Full service asset and cargo monitoring



- Eliminate daily manual trailer location checks
- Save time searching for trailers around network
- Reduce risk of operating trailers beyond operating terms
- Monitor access to transported cargo
- Increase chance of repatriating stolen items



- Reduce risk of losing containers
- Save time searching for containers around network
- Monitor access to transported cargo
- Improve reliability of container arrival/departure logs
- Facilitate digital sealing of containers



- Save time searching for equipment on (client) locations
- Monitor operating hours / movement
- Receive early warnings in case of theft
- Increase chance of repatriating stolen items

GPS-Specificatios

- 12 channels
- Sensitivity
 - Tracking (typical): -157.5 dBm (typical)
 - Reacquisition: -157.0 dBm (typical)
 - Cold start: -144.0 dBm (typical)

GSM/GPS-Specificatios

- Quad-band GSM/GPRS multi-slot 10, Class B
- SMS MO/MT, Text, PDU, Cell Broadcast
- Sensitivity: -108 dBm (typical)
- Remote SIM: 1.8/3V SIM

Environmental

- Operating temperature: -30 – +85 °C
- Storage temperature: -40 – +85 °C
- Resistant to: dust, sand, gravel, pressure wash, salt (fog), humidity, solar radiation.
- Shock and vibration proof.

Standards compliance

- IP 67 (tested against IP 68)
- SAE J1455

Certification

- RoHS compliant
- CE
- FCC (parts 15, 22, 24)
- Industry Canada
- GCF version 3.27.1
- PTCRB version 3.12.0

Mechanical

- Dimensions: 228 (l) x 34 (h) x 63 (w) mm:
- Mounting options
 - Fix mount
 - Magnetic mount (2 x 50 kg)

Electrical characteristics

- Power: Primary C-size Li-Ion 3.6V, 8.5 Ah
- Battery life: > 4 years (1 position per day, typical usage)
- Connectors: None (unless external GPS antenna specified)

Features

- Multiple report options:
 - Set times
 - Set intervals
 - Motion start/stop
 - Set intervals during movement
- Integrated reed contact for optional reporting door open/close events
- Exceptions/alert generation based on geo-zone monitoring (central platform)
- Over-the-Air (re)configuration

Sycada service options

- Managed connectivity platform
- Tracking & tracing platform
- Alarm centre
- International repatriation of stolen items
- Back-end system integration
- Tailored re-engineering to specs

Sycada Benelux

Burgemeester Stramanweg 108 e
1101AA Amsterdam
Netherlands
Tel: +31 20 311 6500
www.sycada.com
info@sycada.com

Sycada Germany

Eisenheimerstraße 47
80687 Munich
Germany
Tel: +49 89 550 616 0

Sycada Hellas

Isminis 10
Athens 17235
Greece
Tel: +30 210 97 51 322